

# Fiber Optic Cabling and Connectivity



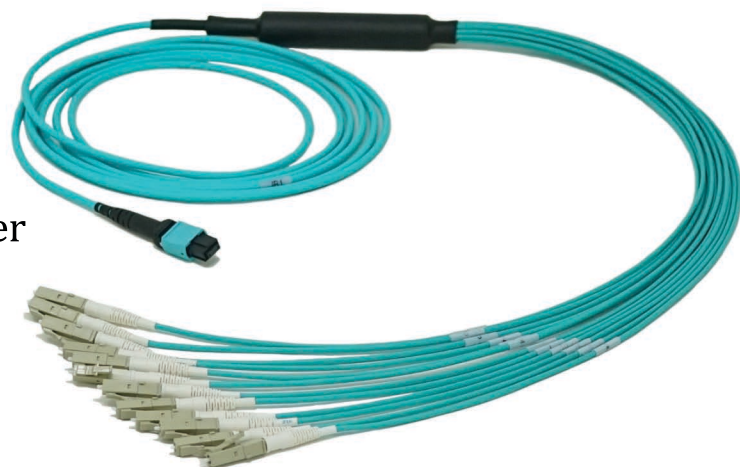
## MTP® Pro Cable Assemblies

### Connectors:

- LC/SX
- LC/DX
- LC-Reversible
- LC-Uniboot
- SC
- CS®
- SN®
- ST
- FC

### Breakout Style:

- 2mm Furcation
- 3mm Furcation
- 900um Tight Buffered Fiber
- Indoor/Outdoor Furcation
- Custom Length/Stagger



### Cable Jacket Type:

- Indoor
- Armored
- Indoor/Outdoor
- OSP

### Cable Jacket Rating:

- Riser
- Plenum
- LSZH

### Fiber:

- 2-288 fibers

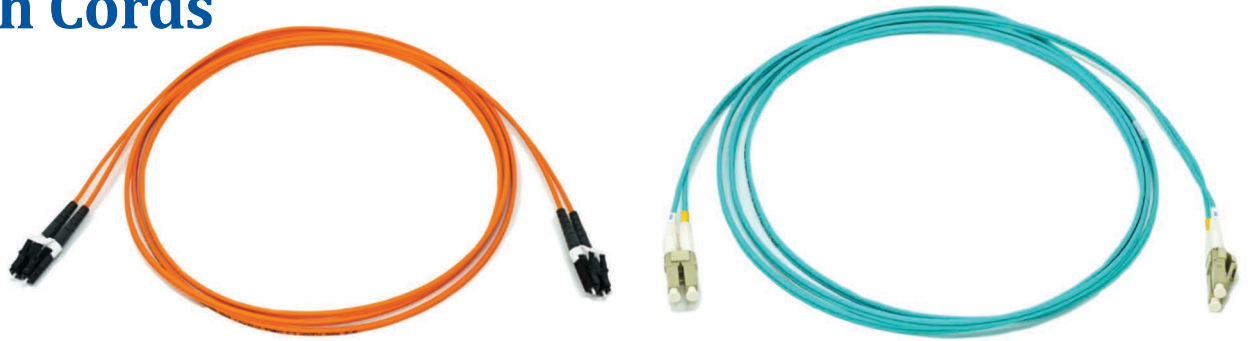
### Fiber Type:

- OM1
- OM2
- OM3
- OM4
- OM5
- Singlemode



*Talk to one of our experienced staff members about your specific project needs.*

# Fiber Patch Cords

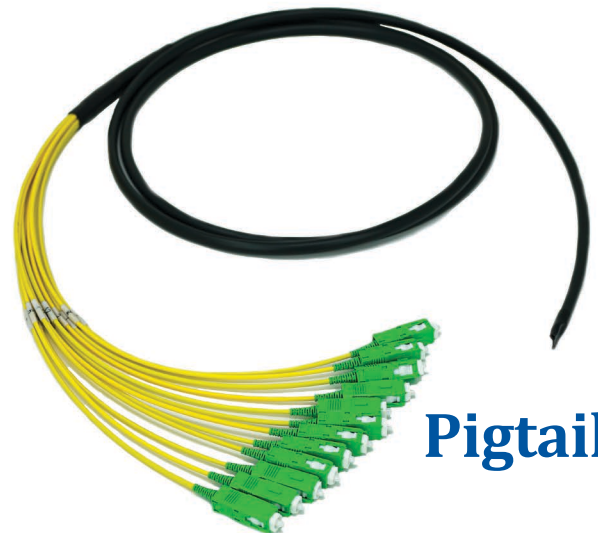
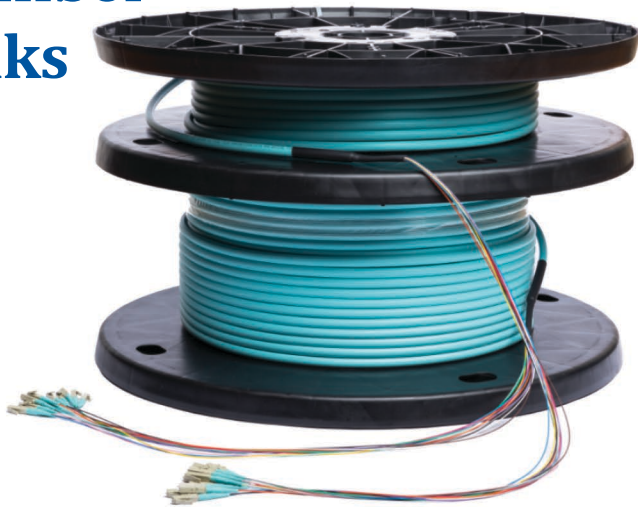


US-made Fiber Patch Cords and Corning Gold (Backed by Corning's 25-year warranty)

- Fiber: 1-2 fibers
- LC/SX, LC/DX, Uniboot and Reverse polarity, SC, ST, FC, CS®\*, and SN®\*
- Fiber Type: OM1, OM2, OM3, OM4, OM5, and Singlemode
- Cable Type: Indoor Duplex, Simplex, and DIB Style
- Cable Jacket: Riser, Plenum, and LSZH in a variety of colors
- Cable OD: 1.2mm, 1.6mm, 2mm, and 3mm

*(\*) Not included in Corning Gold Program*

# Multifiber Trunks



**Pigtails**

- Fiber: 2-288 fibers (Multifiber Trunks), 1-288 fibers (Pigtails)
- LC, SC, ST, CS®, SN®, and FC
- Fiber Type: OM1, OM2, OM3, OM4, OM5, and Singlemode
- Cable Type: Indoor, Armored, Indoor/Outdoor Armored, 900um, and Ribbon
- Cable Jacket: Plenum, Riser, and LSZH
- Breakouts: 900um, 2mm, and 3mm



## Cassettes and Adapter Panels



- Standard and high density
- Fiber: 2-48 fibers (Cassettes) and 6-144 fibers (Adapter Panels)
- Fiber Type: OM1, OM2, OM3, OM4, OM5, and Singlemode
- LC, SC, CS®, SN®, MTP®, and ST in a variety of colors

## Copper RJ45



### Patch Cords

- 23AWG - 28AWG
- CAT5E, CAT6, and CAT6A
- Copper Type: Shielded, Unshielded, and Mini Patch
- Copper Jacket: Riser and Plenum in a variety of colors
- Available in Booted or Non-Booted

## Enclosures: Racks or Wall Mounts

- Patch, Patch & Splice, and Splice
- Rack or Wall Mount
- Fiber: 6-144 fibers
- LC, SC, CS®, SN®, and ST
- Lockable front door with slide out tray (Rack Mount)



## Copper Trunks

- Bundles with jacks or plugs
- CAT5E, CAT6, and CAT6A
- Copper Jacket: Riser and Plenum in a variety of colors
- Available preterminated to various manufacturers' jacks and plugs

For more information on our products, visit our website.



# Conformance Standards

| Optical Interface Parameter Values for MTP® Connector |                                    |                                    |
|---|------------------------------------|------------------------------------|
| Parameter   | IEC/PAS 61755-3-32                 | NetSource, Inc                     |
| X Radius of Curvature                                 | >2,000mm                           | >2,000mm                           |
| Y Radius of Curvature                                 | >5mm                               | >5mm                               |
| X Endface Angle                                       | $-0.15^{\circ} < X < 0.15^{\circ}$ | $-0.15^{\circ} < X < 0.15^{\circ}$ |
| Y Endface Angle                                       | $-0.2^{\circ} < Y < 0.2^{\circ}$   | $-0.2^{\circ} < Y < 0.2^{\circ}$   |
| Fiber Plane Angle X                                   | $-0.15^{\circ} < X < 0.15^{\circ}$ | $-0.15^{\circ} < X < 0.15^{\circ}$ |
| Fiber Plane Angle Y                                   | $-0.2^{\circ} < Y < 0.2^{\circ}$   | $-0.2^{\circ} < Y < 0.2^{\circ}$   |
| Adjacent Fiber Height Differential                    | <0.3um                             | <0.3um                             |
| Fiber Protrusion Height                               | 1,000um<H>3,500um                  | 1,000um<H>3,500um                  |
| Maximum Co-Planarity                                  | NA                                 | 0.4um                              |
| Geometry Limit (Max)                                  | NA                                 | 17.4                               |

| Endface Geometry for MM and SM/UPC Ceramic Ferrule |               |                  |
|--|---------------|------------------|
| Parameter  | IEC 61755-3-1 | NetSource, Inc   |
| Fiber Undercut/Protrusion                          | -100 to 50mm  | -100 to 50mm     |
| Radius of Curvature (ROC)                          | 5 to 30mm     | 7 to 25mm        |
| Apex Offset  | <70mm         | <50mm            |
| <b>Ferrule Inside Diameter</b>                     | NA            | 125.5um to 127um |

| Insertion and Return Loss |                            |           |       |            |       |
|---------------------------|----------------------------|-----------|-------|------------|-------|
| Characteristics           | Standard                   | Multimode |       | Singlemode |       |
|                           |                            | MTP       | LC/SC | MTP        | LC/SC |
| Insertion Loss (Maximum)  | TIA 568-C.3                | .75dB     | .75dB | .75dB      | .75dB |
|                           | NetSource, Inc. (std loss) | .35dB     | .25dB | .60dB      | .25dB |
|                           | NetSource, Inc. (low loss) | .25dB     | .15dB | NA         | NA    |
| Return Loss (Minimum)     | TIA 568-C.3                | -20dB     | -20dB | -26dB      | -26dB |
|                           | NetSource, Inc.            | -25dB     | -30dB | -60dB      | -57dB |

| Testing Standards                |
|----------------------------------|
| TIA-455-171 Insertion Loss       |
| TIA-455-107 Return Loss          |
| IEC-61300-3-35 Visual Inspection |
| FOTP-171 Method A or C           |
| RoHS/REACH Compliant             |